



Design Support

Don Rerick, P.E.

Project Management Branch Manager
Planning and Project Management Division

3 New Design Projects

- Siphon Draw Drainage Improvements
 - Late Fiscal Year 2007
- Bethany Home Outfall Channel Phase 2D
 - Currently being Advertised
- Pinnacle Peak Road (83rd Ave. to 107th Ave.) Drainage Improvements
 - Mid Fiscal Year 2008

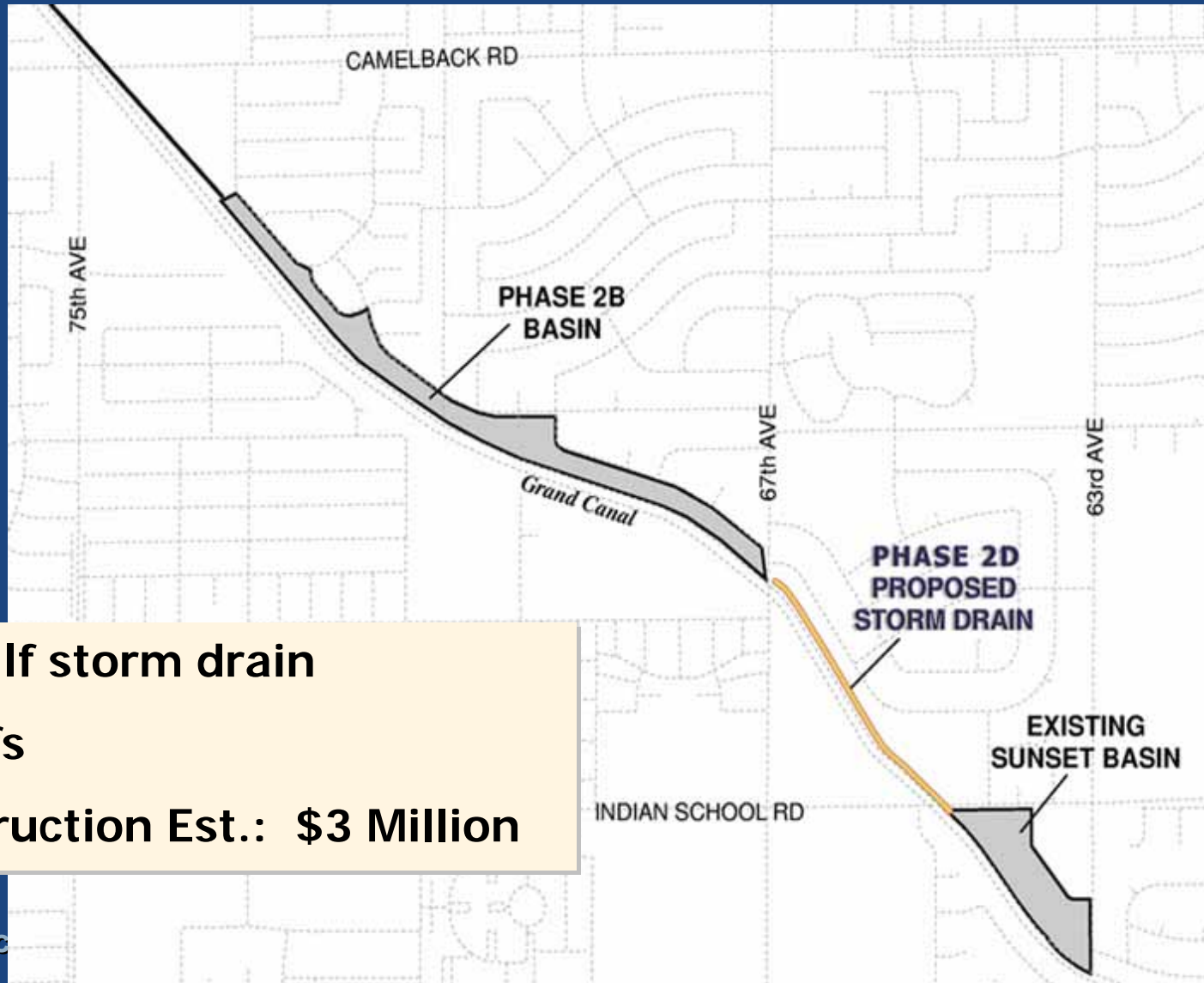


Siphon Draw Drainage Improvements

- Basins, channels, storm drains
- 2,500 cfs
- Construction Est.: \$10 Million



Bethany Home Outfall Channel Phase 2D

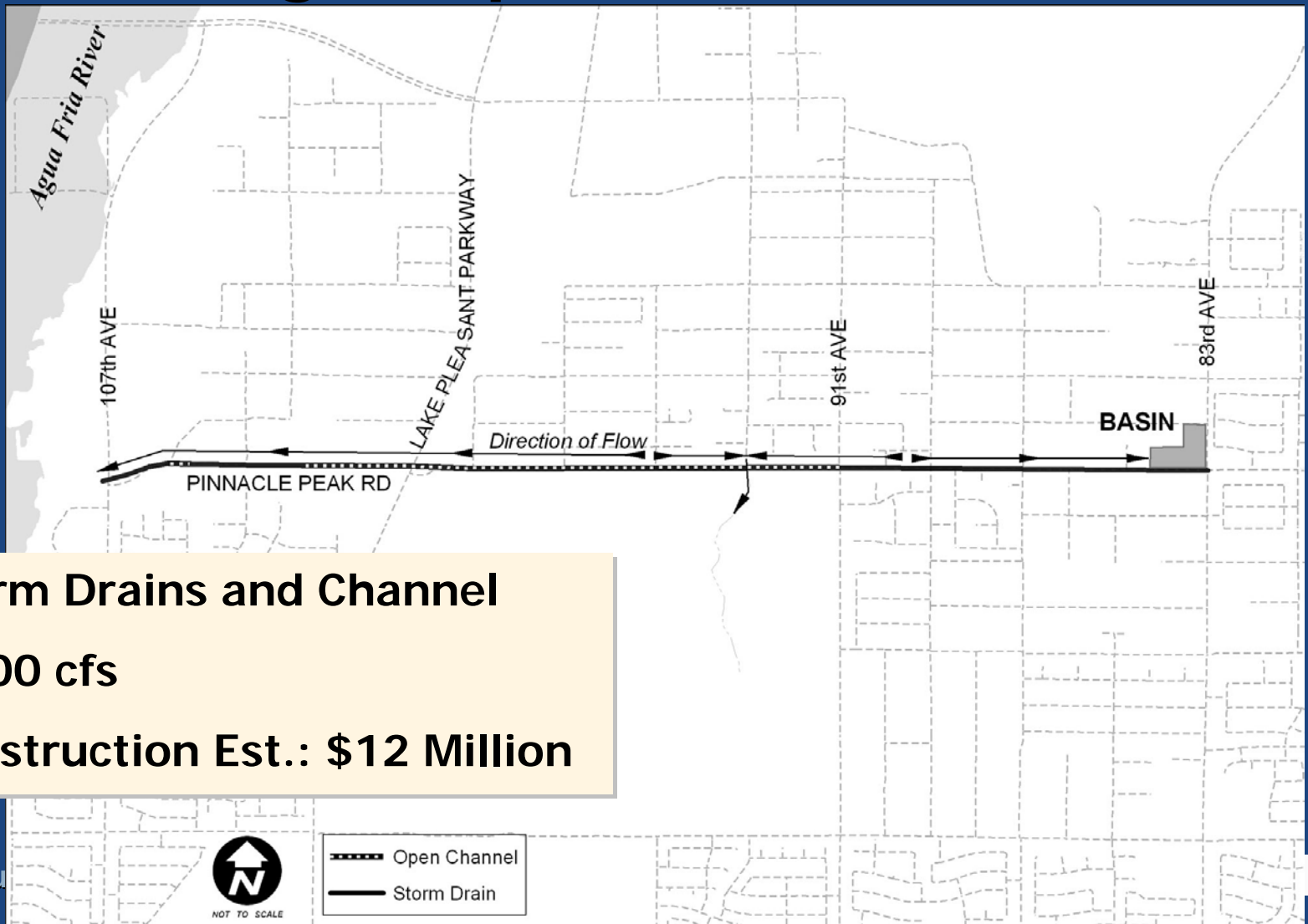


- 2,600 lf storm drain
- 340 cfs
- Construction Est.: \$3 Million



Public

Pinnacle Peak Road Drainage Improvements



- Storm Drains and Channel
- 1,500 cfs
- Construction Est.: \$12 Million



Pu



NOT TO SCALE

- Open Channel
- Storm Drain

On-call Contracts

Construction Support Activities

- New Register Based Selection Contract
- One Materials Testing Contract
 - Quality Assurance
- No Construction Management Contract
 - Prime, Support, Inspection





Design Support **Questions**

Don Rerick, P.E.

Project Management Branch Manager
Planning and Project Management Division