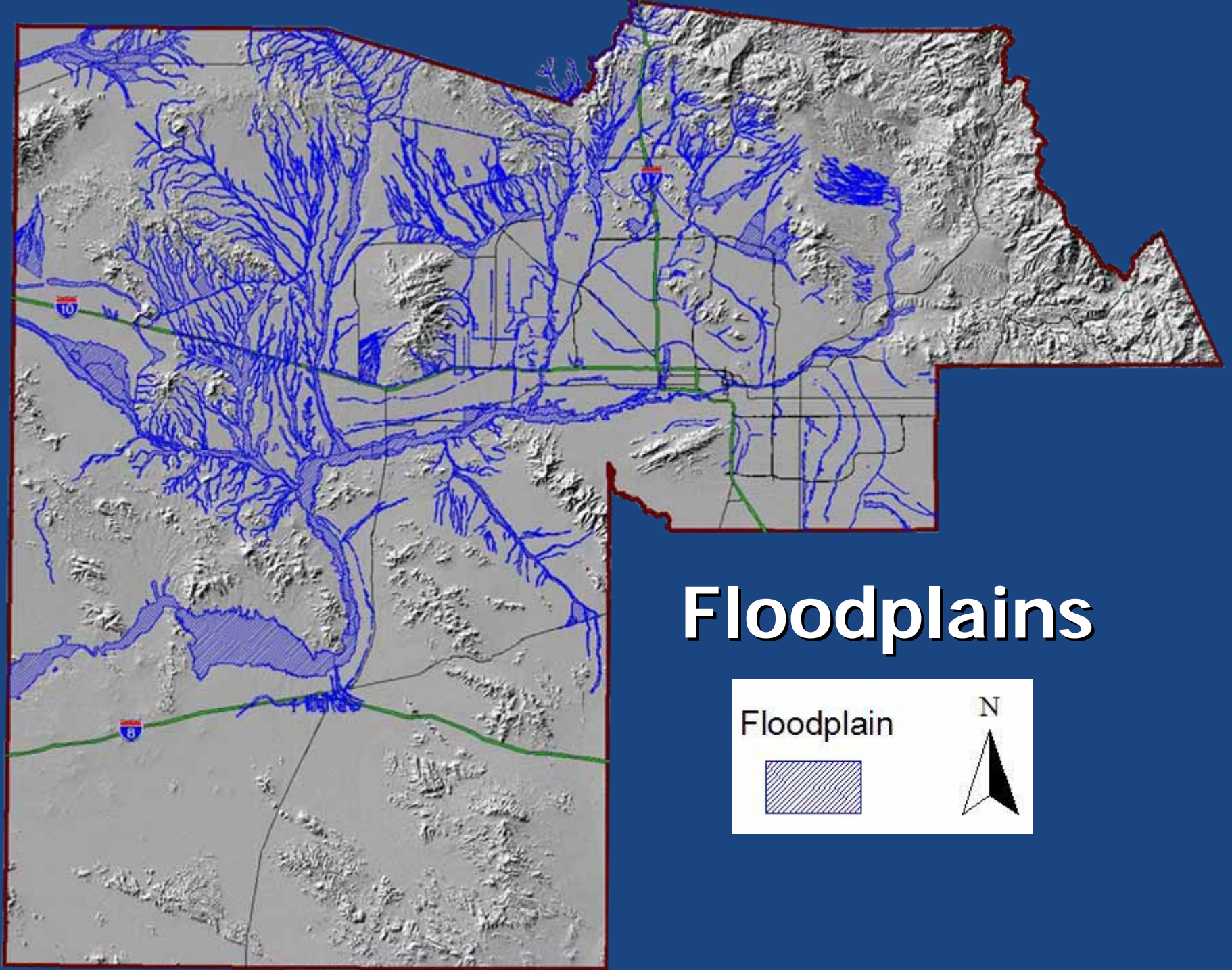




Floodplain Delineation Studies

Tim Murphy, P.E., CFM

Engineering Branch Manager
Planning and Project Management Division



Floodplains

Floodplain



Major Ongoing Delineations

Flood Delineation Branch Only

Detailed Studies

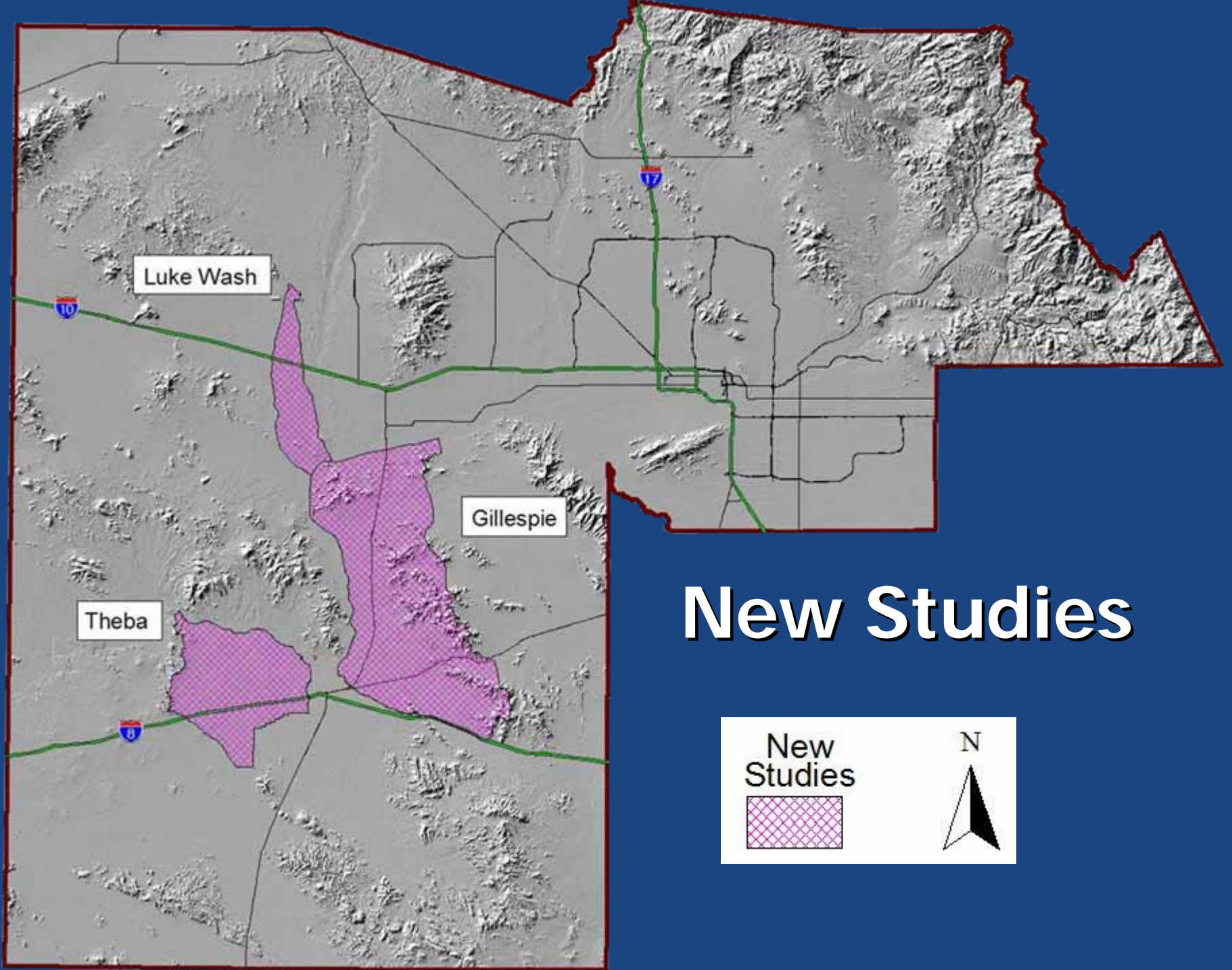
(Zone AE)

	<u>Miles</u>
Chandler Gilbert	46
Upper Daggs/ Star Wash	70
Total Miles	116

Approximate Studies (Zone A)

	<u>Miles</u>
Lower Painted Rock	235
Sentinel	50
Total Miles	285





Luke Wash

Gillespie

Theba

New Studies

New Studies



N



Proposed Delineation Studies

Beginning in Fiscal Year 2007/2008

	Linear <u>Miles</u>
Luke Wash Watershed Detailed	70
Gillespie Watershed Zone A	150
Theba Watershed Zone A	50



Flood Delineation Branch

Fiscal Year 2007/2008 Proposed Budget

On-Going Studies	\$ 450,000
New Studies	\$ 950,000
Total	\$1,400,000





Floodplain Delineation Studies **Questions**

Tim Murphy, P.E., CFM

Engineering Branch Manager
Planning and Project Management Division