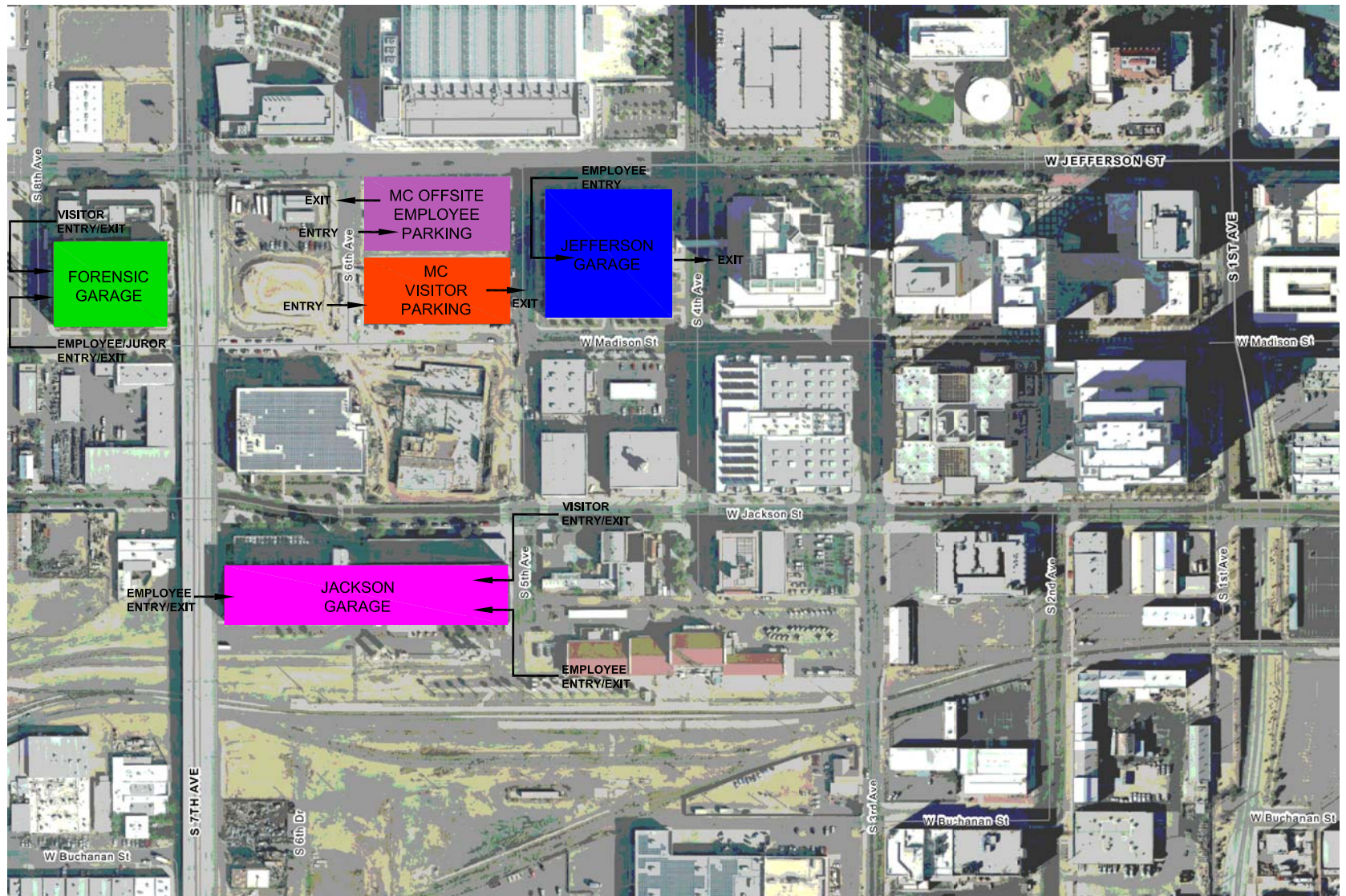









MARICOPA COUNTY PROTECTIVE SERVICES DEPARTMENT DOWNTOWN PARKING LOCATIONS

FOR ASSISTANCE CALL 602-506-6880



-  = **FREE** CUSTOMER/VISITOR PARKING LOCATED AT 5TH AVE. AND MADISON (MONDAY-FRIDAY 8:00AM 6:00PM *2 HOUR LIMIT)
-  = EMPLOYEE COVERED PARKING LOCATED AT 5TH AVE AND JEFFERSON
-  = M.E. CUSTOMER/JUROR COVERED PARKING LOCATED AT 8TH AVE AND JEFFERSON (MONDAY-FRIDAY 8:00AM 6:00PM (M.E. CUSTOMER/JUROR)
-  = COC/ASSESSOR CUSTOMER/VISITOR/EMPLOYEE PARKING LOCATED AT 5TH AVE AND JACKSON (VISITOR SIDE MONDAY-FRIDAY 8AM-6PM *2 HOUR LIMIT)
-  = MARICOPA COUNTY EMPLOYEE OFFSITE PARKING LOCATED AT 6TH AVE. AND JEFFERSON