

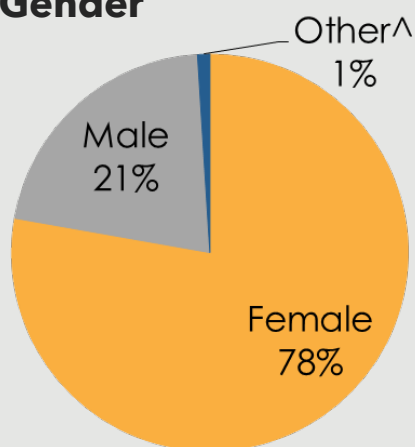
Southeast Valley

Responses to the 2019 Community Health Assessment Survey from the residents in the Southeast Valley.

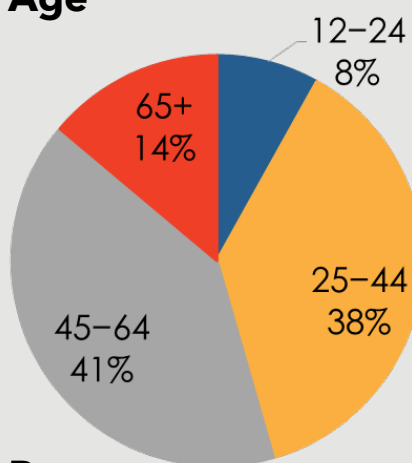
Who took the survey in the Southeast Valley?



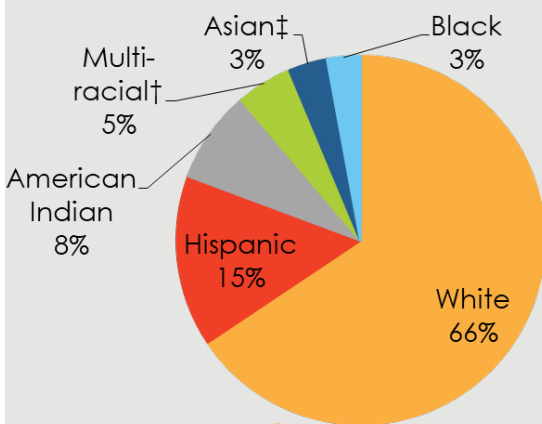
Gender



Age



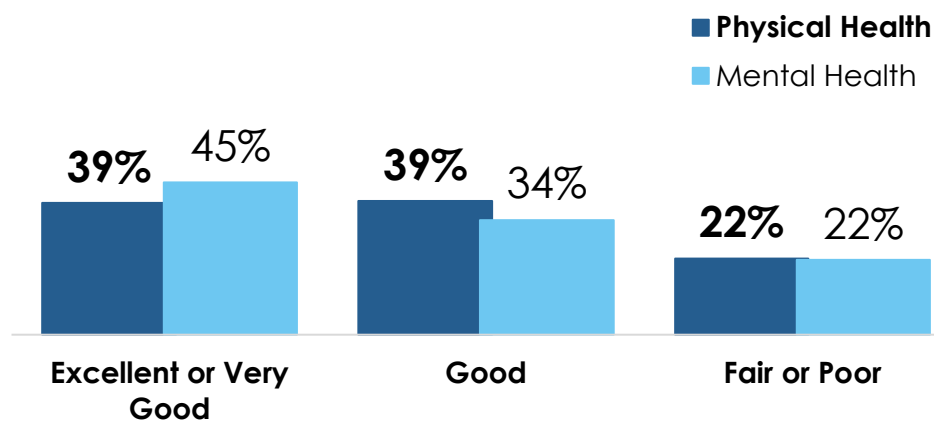
Race



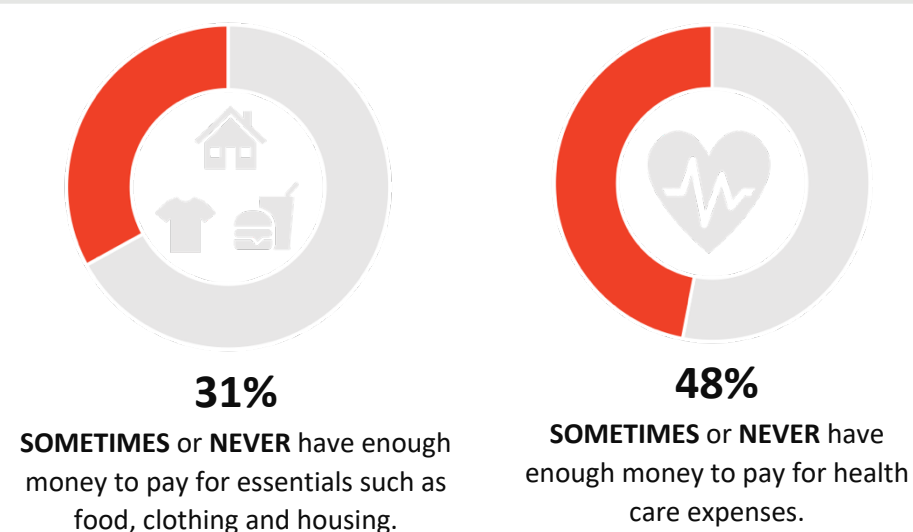
14%

reported a household income of **less than \$20,000.**

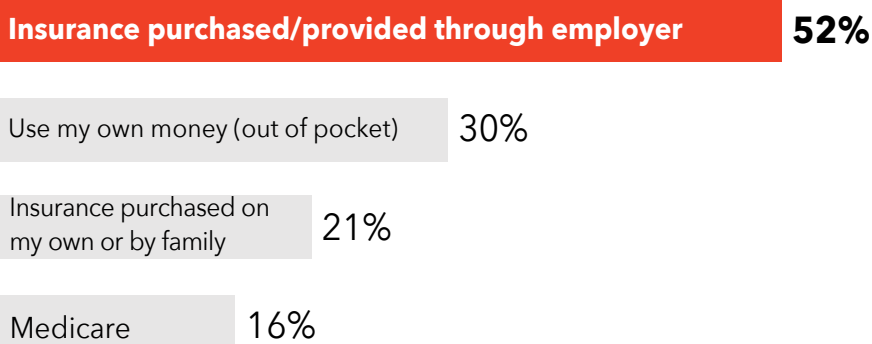
How do respondents in the Southeast Valley rate their Physical and Mental Health?



Do respondents in the Southeast Valley struggle each month to pay for medical care and/or necessities?



How do residents in the Southeast Valley pay for health care?



2362 surveys collected.

Some demographic data may total over 100% due to rounding.

[^] The 'Other' category includes 'Transgender' responses for gender.

[‡] The 'Multi-racial' category includes 'Other' responses or race/ethnicity.

[†] The 'Asian' category includes 'Asian' and 'Native Hawaiian or Other Pacific Islander' responses for race/ethnicity.

TOP 3
COMMUNITY
STRENGTHS



Access to parks and recreation sites ----- 65%

Access to public libraries and community centers ----- 56%

Clean environments and streets ----- 43%

TOP 3
COMMUNITY
ISSUES



Distracted driving ----- 51%

Homelessness ----- 29%

Illegal drug use ----- 24%

TOP 3
BARRIERS TO
HEALTHCARE



Underinsured ----- 36%

Difficulty finding the right provider for my care ----- 33%

Inconvenient office hours ----- 30%

TOP 3
HEALTH
CONDITIONS



Alcohol or substance abuse ----- 50%

Mental health issues ----- 44%

Overweight or obesity ----- 42%

Want More?

- Find out how your city compares to other cities in Maricopa County.
- Submit a Data Request to obtain regional survey results.
- Join Synapse to partner with local organizations.

Contact:

[Eileen Aguilar](#)

(602) 859-4763

Eileen.Aguilar@maricopa.gov

[Data Request:](#)

<https://www.maricopa.gov/data-request>