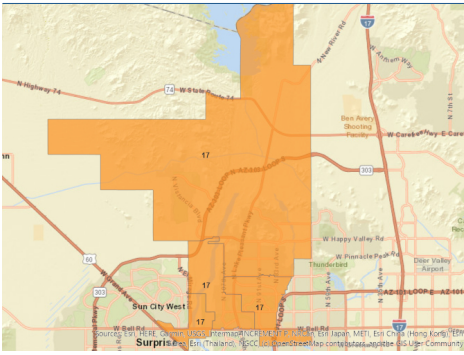


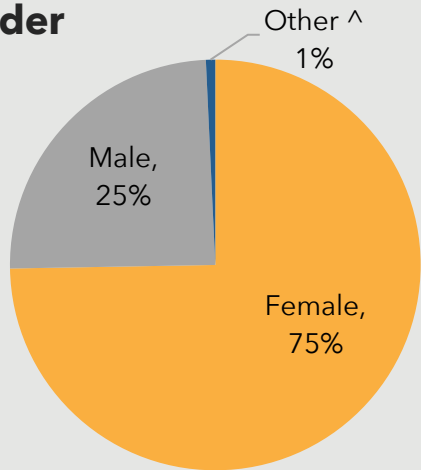
ZONE 17

Responses to the 2019 Community Health Assessment Survey from the residents of Zone 17.

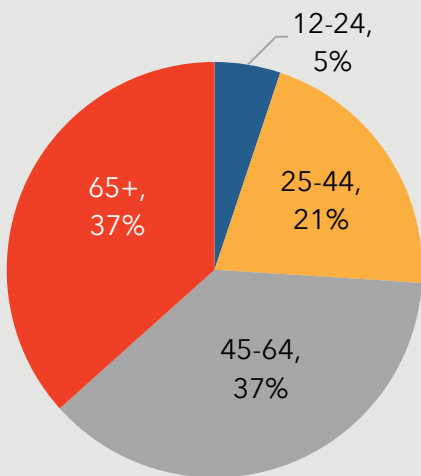


Who took the survey in Zone 17?

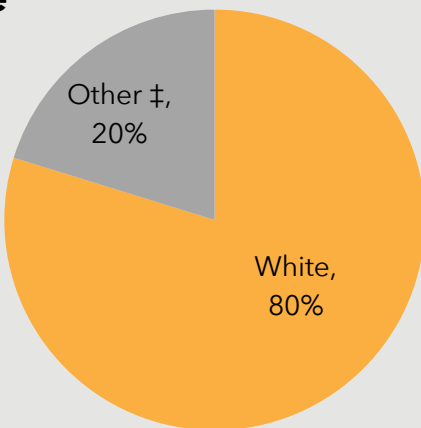
Gender



Age



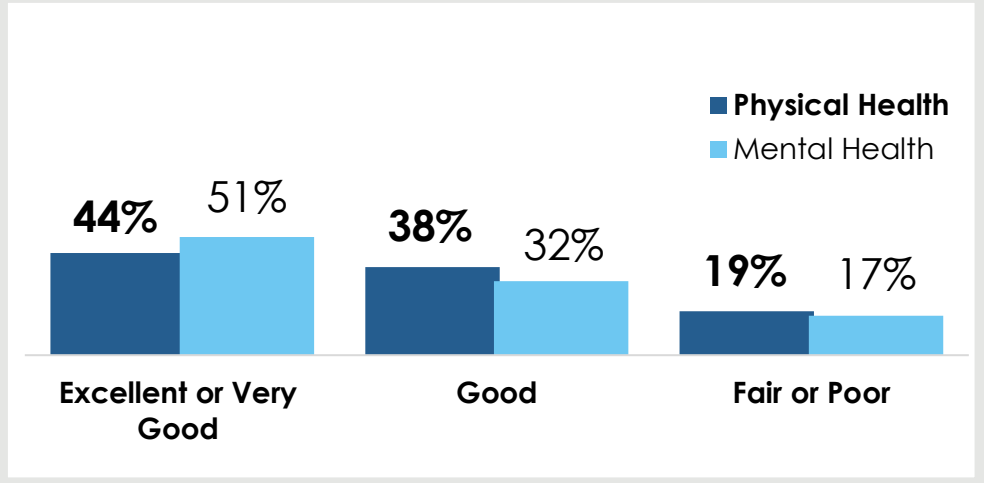
Race



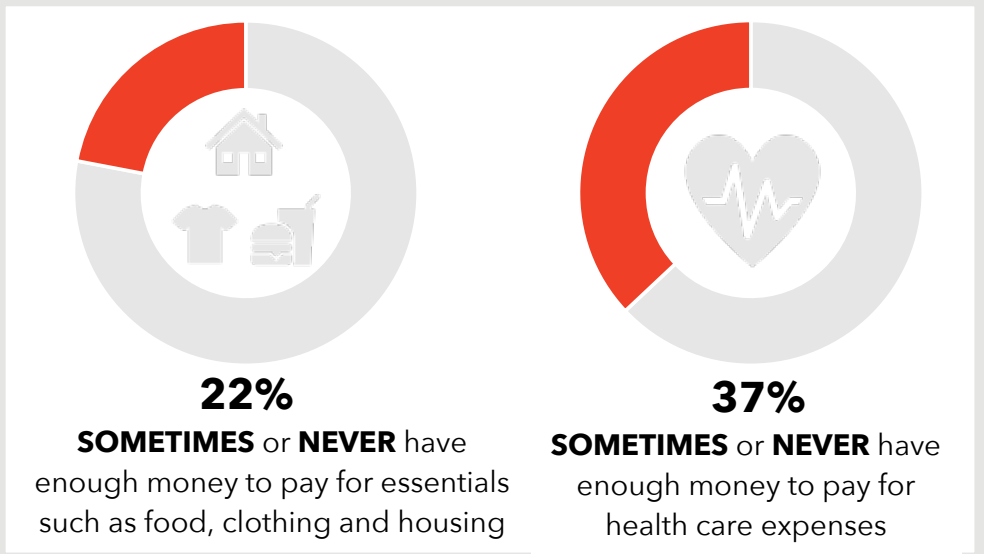
13%

reported a household income of **less than \$20,000.**

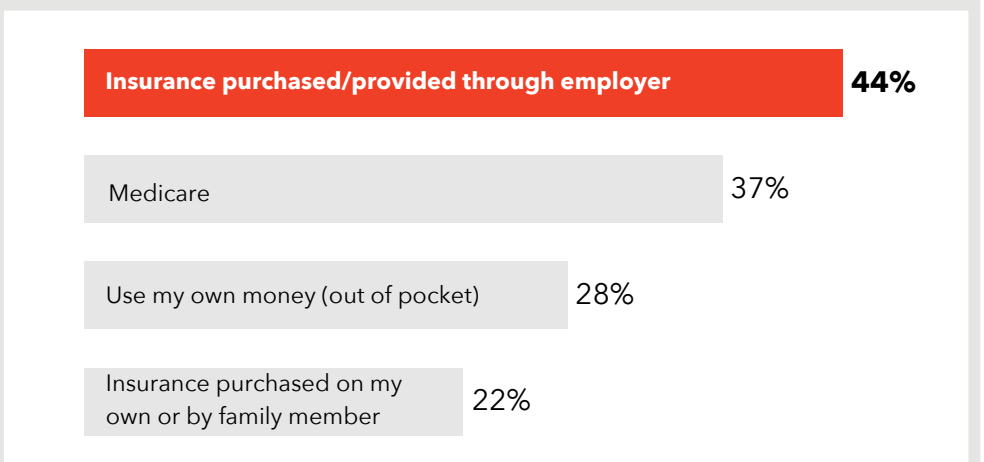
How do respondents in Zone 17 rate their Physical and Mental Health?



Do respondents in Zone 17 struggle each month to pay for medical care and/or necessities?



How do residents in Zone 17 pay for their health care?



274 surveys collected.

^ The 'Other' category includes 'Transgender' responses for gender. Some demographic data will total over 100% due to rounding.

‡ Due to low response rates, the 'Other' category includes 'Asian', 'Black or African American', 'American Indian or Native American', 'Multi-racial', 'Hispanic or Latino', and 'Other' responses or race/ethnicity.

TOP 3
COMMUNITY
STRENGTHS



Access to parks and recreation sites ----- 60%

Clean environments and streets ----- 59%

Low crime/safe neighborhoods ----- 58%

TOP 2
COMMUNITY
ISSUES



Distracted driving ----- 58%

Lack of public transportation ----- 32%

TOP 3
BARRIERS TO
HEALTHCARE



Difficulty finding the right provider for my care ----- 34%

Underinsured ----- 32%

Inconvenient office hours ----- 21%

TOP 3
HEALTH
CONDITIONS



Alcohol/substance abuse ----- 38%

Overweight/obesity ----- 37%

Cancers ----- 35%

Only results with at least 50 responses are displayed.

Want More?

- Find out how your city compares to other cities in Maricopa County.
- Submit a Data Request to obtain regional survey results.
- Join Synapse to partner with local organizations.

Contact:

[Eileen Aguilar](#)

(602) 859-4763

Eileen.Aguilar@maricopa.gov

[Data Request:](#)

<https://www.maricopa.gov/data-request>